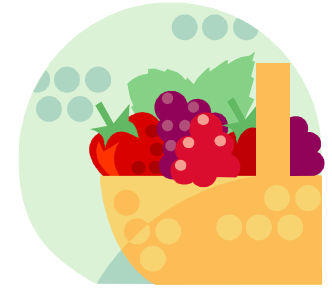




**MEALS  
ON WHEELS**  
*Working together to feed more*

# JUNE 2010 Second Meal Menu

Approved by: Colleen T. Keller, R.D.



Monday	Tuesday	Wednesday	Thursday	Friday
	1] Deviled Eggs w/ Crackers Tomato Basil Salad Apricot Halves	2] Roast Beef Sandwich Old Fashioned Potato Salad Fresh Grapes	3] Chicken Salad Sandwich Greek Salad Fruited Yogurt	4] Tuna Salad Plate 3-Bean Salad Fruit Cocktail
7] Pimento Cheese Rolls Apple Coleslaw Tropical Fruit	8] Filet of Chicken Sandwich Sweet & Sour Green Beans Key Lime Mousse	9] Deviled Ham Sandwich Betty's Potato Salad Spiced Peaches	10] Roast Beef & Cheddar Sandwich Creamy Coleslaw Pineapple Tidbits	11] Chicken Salad Sandwich Barley Pilaf Salad Cucumber Sour Cream Salad
14] Turkey Sandwich Broccoli Slaw Diced Pears	15] Roast Pork & Peach Chutney Sandwich Mixed Bean Salad Vanilla Pudding	16] Herbed Cream Cheese & Cucumber Sandwich Black-eyed Pea Salad Lime Pineapple Gelatin	17] Shrimp Louis Pasta Salad Grilled Vegetable Salad Mandarin Oranges	18] Mini Italian Sub Sandwich Lettuce & Tomato Italian Pasta Salad Fruited Yogurt
21] Herbed Dijon Chicken Salad Crackers Brown Bean Salad Carrot Raisin Salad	22] Bologna & American Cheese Sandwich Mustard Potato Salad Fruit Cocktail	23] Turkey Club Sandwich Sweet & Sour Coleslaw Apricot Halves	24] Ham Sandwich Green Pea Salad Banana Pudding	25] Seafood Salad Crackers Tomato Orzo Salad Tropical Fruit Salad
28] Ham & Swiss Sandwich Creole Corn Salad Peach Lime Gelatin	29] Deviled Eggs w/ Crackers Tomato Basil Salad Apricot Halves	30] Roast Beef Sandwich Old Fashioned Potato Salad Fresh Grapes		

Meal includes 1% milk or 100% fruit juice. Fruits are unsweetened.

**Menu may change without notice**